



... SET ACCENTS

NEW BUILD

MODERN

AND

CLASSIC

OLD BUILDING

AND

RENOVATION





... as decorative accents for the individual design and accentuation of your property.

You can obtain your facade elements from us in the lightweight construction materials EPS and LB-Light or in artificial stone.

We deliver:

- ✓ Cornices
- ✓ Door and window surrounds
- ✓ Window sills
- ✓ Bricks and profiles
- ✓ Decorative elements
- ✓ Column cladding
- ✓ Facade structures

We deliver:

- ✓ Planning documents
- ✓ Reconstructions
- ✓ Visualizations

OUR SERVICES IN THE FIELD OF FACADE DESIGN



- ① Roof cornice
- ② Gable cornice
- ③ Gable base cornice
- ④ Belt cornice
- ⑤ Round window surround
- ⑥ Door surround
- ⑦ Roofing
- ⑧ Column cladding
- ⑨ Window sill cornice
- ⑩ Window sill
- ⑪ Boss profile
- ⑫ Base plate

LB FASSADENELEMENTE ... SET ACCENTS

Modern houses are sometimes given a very **special touch** with horizontal or vertical facade structures. We can help you with this and will be happy to work with you to realize your **individual wishes**.

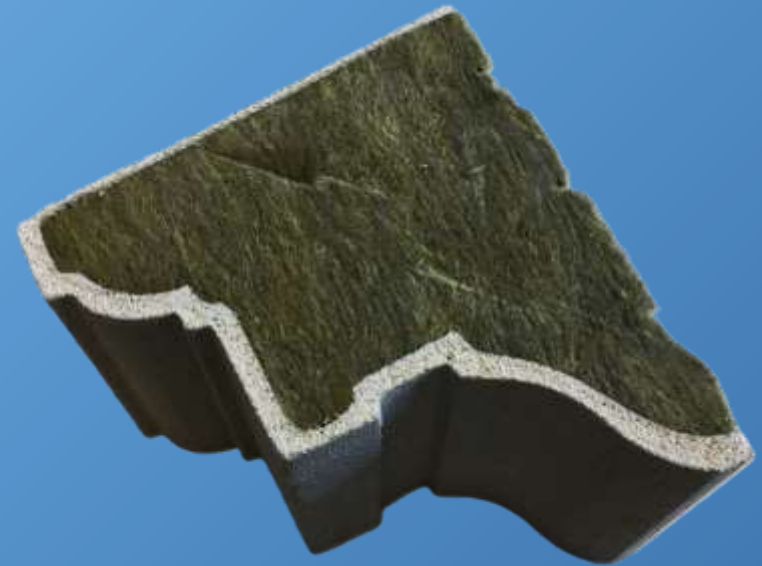
Don't hesitate to get in touch with us, we will discuss in person how our innovative products can turn your wishes into reality.



FACADE STRUCTURES

FASSADENELEMENTE in LB-LIGHT

Our innovative LB-Light product has the great advantage of being non-combustible. The elements are lightweight, weather-resistant thanks to our special coating, can be coated with any façade paint after installation, can be manufactured in almost any shape using suitable CNC processes, are easy to install and impress with their high insulation value.

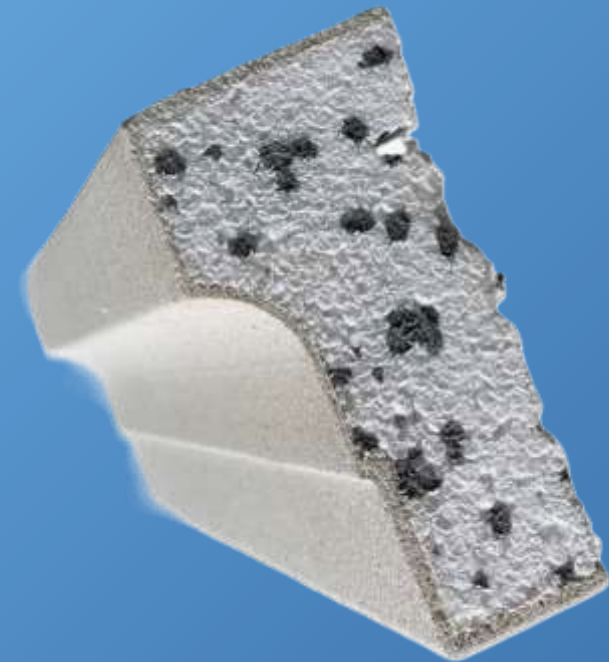


VARIOUS MATERIALS

... for different applications

FACADE ELEMENTES in EPS

Facade elements made of EPS (Expanded Polystyrene rigid foam) are very light, weather-resistant thanks to our special coating, can be painted with any facade coating after installation, can be supplied in almost any shape thanks to CNC production, impress with their high insulation value, are easy to install and are our most cost-effective version.



VARIOUS MATERIALS

... for different applications

FACADE ELEMENTES in ARTIFICIAL STONE

Facade elements made of artificial stone are non-combustible, weather-resistant and can be produced in almost any shape thanks to our in-house mold construction. After installation, the elements can be painted in any color.

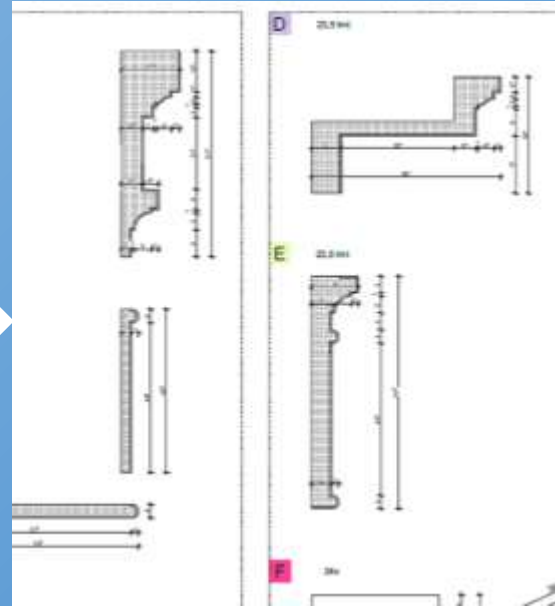
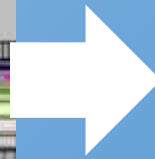


VARIOUS MATERIALS

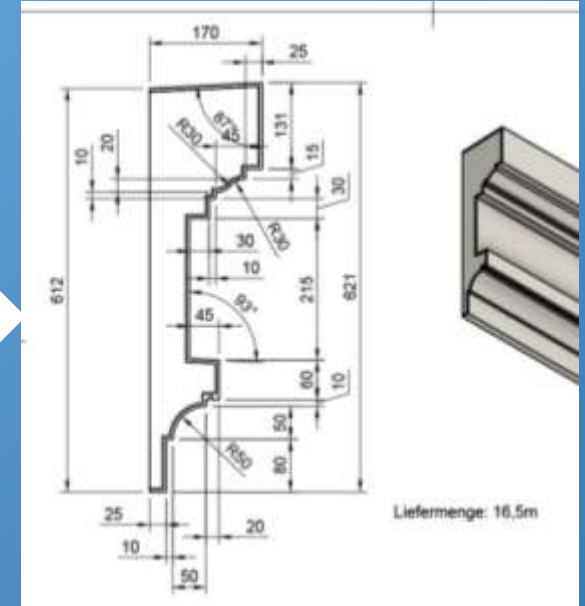
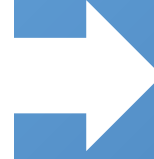
... for different applications



ARCHITECT'S PLAN



DETAILS

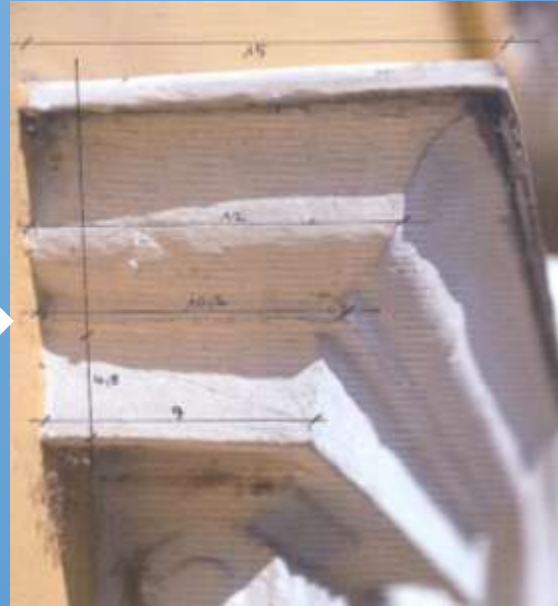
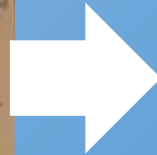


WORK PLANNING

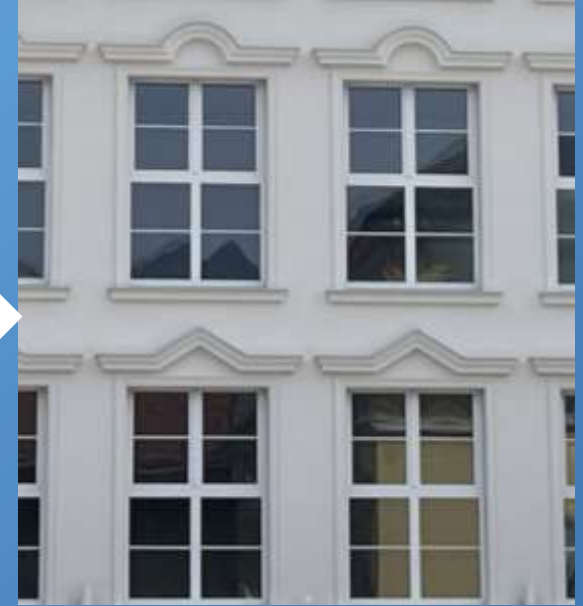
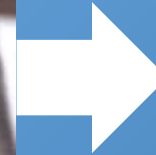
PLANNING



EXISTING PROJECT



EXISTING PROJECT

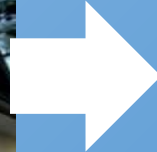


REBUILDING

RECONSTRUCTION



EXISTING PROJECT



CUSTOMER IDEA



VISUALIZATION

VISUALIZATION

UNSERE FASSADENELEMENTE ... SET ACCENTS

This facade was fitted with **LB-Light** elements from our company.



This facade was fitted with LB-Light elements from our company.



This facade was fitted with LB-Light elements from our company.

FAMILY HOME IN NORTHERN GERMANY

UNSERE FASSADENELEMENTE ... SET ACCENTS

Facade decorations such as cornices, door and window surrounds were realized with **LB-Light** elements.

The planning was carried out by the Sebastian Treese architectural office in Berlin.

All elements of the facade were realized according to the client's ideas.



CITY HOUSE IN BERLIN

UNSERE FASSADENELEMENTE ... SET ACCENTS

The cornices, window recesses, sills, ashlars and decorations were realized with **EPS** elements.

The window sills and balcony parapets were made of **cast stone**.



VILLA ON TEGERNSEE

UNSERE FASSADENELEMENTE ... SET ACCENTS

The cornices, window surrounds and sills were realized with **EPS** elements.



The parapet on the staggered storey and the columns were made of **cast stone**.



FAMILY HOME IN SALZBURG

UNSERE FASSADENELEMENTE ... SET ACCENTS

The cornices, door and window surrounds, plinth elements and the complete embossing were realized with EPS elements.



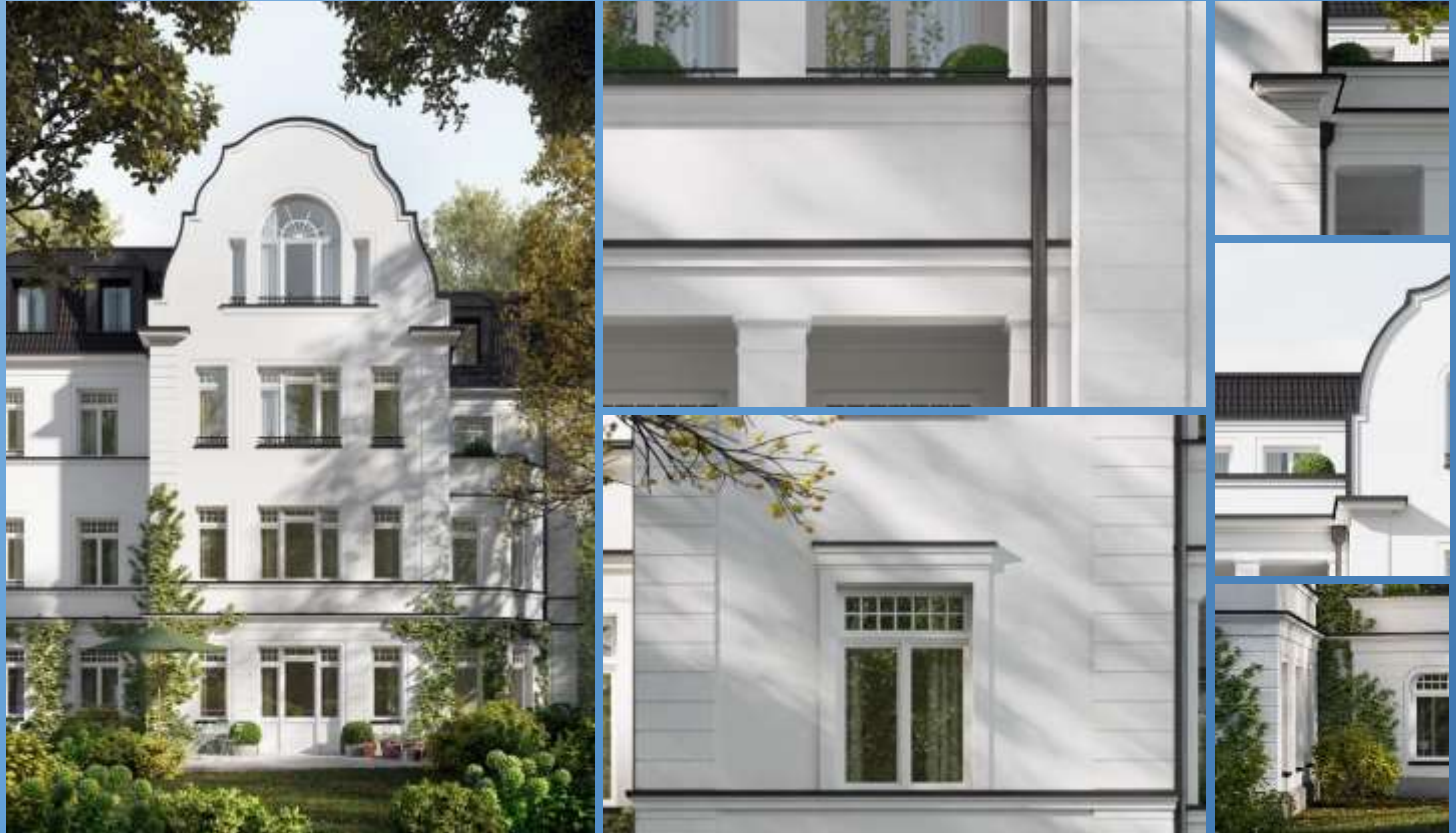
VILLA IN VIENNA

UNSERE FASSADENELEMENTE ... SET ACCENTS

This facade was decorated with **LB-Light** elements.

The planning was carried out by the Sebastian Treese architectural office in Berlin.

All elements of the facade were implemented according to the client's ideas



MULTI-FAMILY HOUSE IN HAMBURG

UNSERE FASSADENELEMENTE ... SET ACCENTS

All facade elements such as cornices, window surrounds and window sills were executed in our innovative **LB Light** product or in **EPS**.



RESIDENTIAL COMPLEX IN TIROL

UNSERE FASSADENELEMENTE ... SET ACCENTS

Door and window surrounds and balustrades were made of **artificial stone**.

The cut-outs for the doorbell system were incorporated into the frames for the entrance doors so that they could be installed without any problems.

The planning was carried out by the Sebastian Treese architectural office in Berlin.



DUPLEX NOUSE IN DÜSSELDORF

UNSERE FASSADENELEMENTE ... SET ACENTS

LB facade elements also set accents here, and all window sills were made of artificial stone.

The planning was carried out by the Sebastian Treese architectural office in Berlin.

All elements of the facade were realized according to the client's ideas



VILLA IN BERLIN GRUNEWALD

UNSERE FASSADENELEMENTE ... SETZEN AKZENTE

The facade elements were executed in **LB-Light** and the parapet elements on the staggered storey in **cast stone**.

All elements of the facade were realized according to the client's ideas



TAUBERTSTRASSE IN BERLIN GRUNEWALD

LB Fassadenelemente GmbH
Huebstraße 17
A-4786 Brunnenthal
Telefon: +43 (0)7712 36295
eMail: info@lb-fassadenelemente.com
Homepage: lb-fassadenelemente.com



... SET ACCENTS